

## Parameters

	KL1.2	KL1.5	KL1.8	KL2	KL2.5	KL3
LED Type	Black SMD1010	Black SMD1212	Black SMD1515	Black SMD1515	Black SMD2121	Black SMD2121
Pixel Pitch (mm)	1.25	1.53	1.83	2	2.5	3.07
Panel Dimensions (W*H*D) /(mm)	640x480x60	640x480x60	640x480x60	640x480x60	640x480x60	640x480x60
Panel Resolution	512x384	416x312	348x261	320x240	256x192	208x156
Panel Weight (kg)	7.8	7.8	7.8	7.8	7.8	7.8
Panel Material	Die Casting Aluminum					
Module Size (W*H)	320×160	320×160	320×160	320×160	320×160	320×160
Brightness (nit)	600	700	700	700	700	700
Refresh Rate (Hz)	1920~3840	1920~3840	1920~3840	1920~3840	1920~3840	1920~3840
Grayscale (bit)	13~14	13~14	13~14	13~14	13~14	13~14
Contrast Ratio	4000:1	4000:1	4000:1	4000:1	4000:1	4000:1
Color Temperature (K)	6500	6500	6500	6500	6500	6500
Viewing Angle (H/V) (°)	140/140	140/140	160/160	140/140	140/140	140/140
Drive Mode	1/32	1/26	1/29	1/40	1/32	1/26
AC Operating Voltage (V)	200~240	200~240	200~240	200~240	200~240	200~240
Power Consumption (Max./Avg.)(W/m²)	582/194	555/185	540/180	480/160	540/180	540/180
Storage Temperature (°C)	- 40~ + 60	- 40~ + 60	- 40~ + 60	- 40~ + 60	- 40~ + 60	- 40~ + 60
Operating Temperature (°C)	- 10~ + 40	- 10~ + 40	- 10~ + 40	- 10~ + 40	- 10~ + 40	- 10~ + 40
Storage Humidity (RH)	10 % ~85 %	10 % ~85 %	10 % ~85 %	10 % ~85 %	10 % ~85 %	10 % ~85 %
Operating Humidity (RH)	10 % ~80 %	10 % ~80 %	10 % ~80 %	10 % ~80 %	10 % ~80 %	10 % ~80 %
IP Rating (Front/Rear)	IP40/IP21	IP40/IP21	IP40/IP21	IP40/IP21	IP40/IP21	IP40/IP21
LED Lifetime (H)	100000	100000	100000	100000	100000	100000
Module Maintenance	Fully front/rear					
PSU & Other Maintenance	Fully front/rear					
Panel Installation Type	Stacking/ Wall-mounting / Hanging					



## KL Series

SHINING STAR, CONSTANT QUALITY

★ Shenzhen Absen Optoelectronic Co., Ltd. reserves the right to modify product design, specifications, and parameters without further notice.  
Photos are used for illustration purpose only as products may differ from these photos. All rights reserved by Shenzhen Absen Optoelectronic Co., Ltd.

### Absen Optoelectronic Co.,Ltd

18-20F Building 3A, Cloud Park, Bantian Huawei Base,  
Longgang District Shenzhen, 518129, P.R.China  
T: +86-755-89747399 E: absen@absen.com  
F: +86-755-89747599 W: www.absen.com

### Absen Inc.

7120 Lake Ellenor Drive Orlando,  
Florida 32809, USA  
T: +1-407-203-8870 E: info@usabsen.com  
F: +1-407-203-8873 W: www.usabsen.com

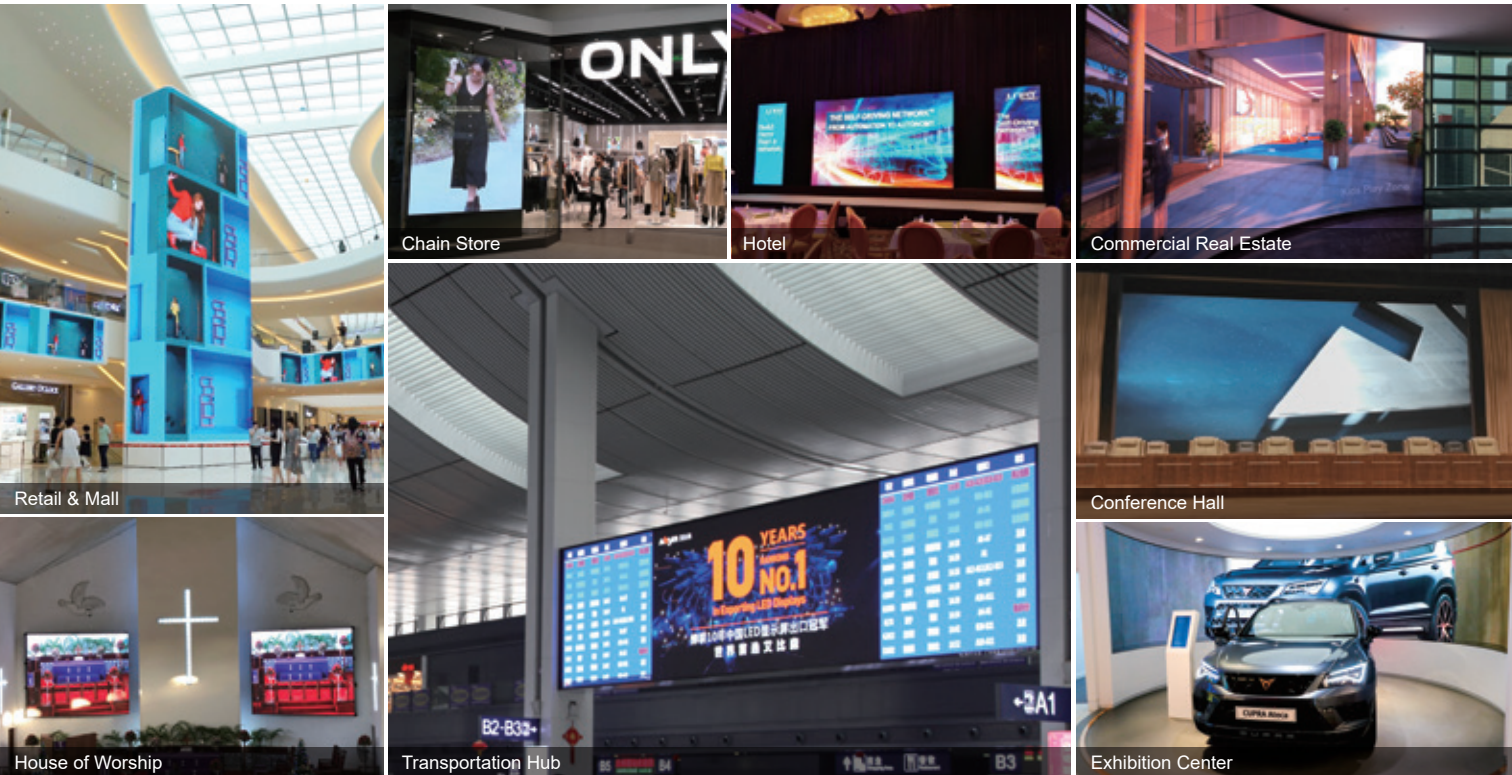
### Absen GmbH

Eisenstraße 5, 65428 Rüsselsheim a.M.,  
Germany  
T: +49 (0) 6142 78935-0 E: europe@absen.com  
F: +49 (0) 6142 78935-29 W: www.absen-europe.com

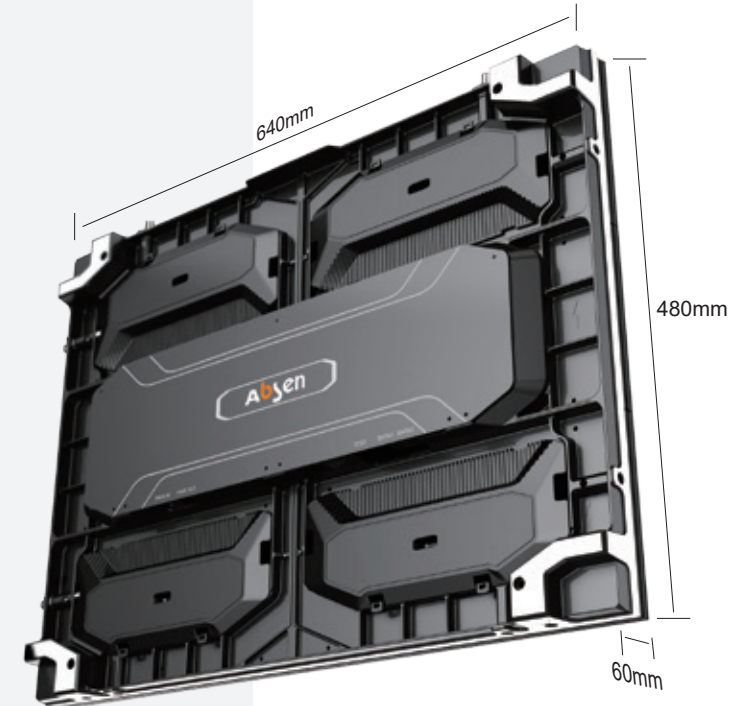






# For All Application Scenarios of Commercial Display

· Pixel Pitch (mm) : P1.2/P1.5/P1.8/P2/P2.5/P3



And More Application Scenarios.....



-  High-quality power box
-  High-performance receiving card
-  High-standard wire
-  Fine die-casting aluminum cabinet

## Superior Quality

- Guaranteed quality with high quality power box, receiving card and other accessories
- Precision die-casting aluminum cabinet processed by CNC precision machining which results in ultra-high flatness
- Ratproof and dustproof panel with closed design

# Vibrant Color for Better Vision

- Richer colors with 4000:1 high contrast
- 110% NTSC wide color gamut for better color fidelity



High Contrast



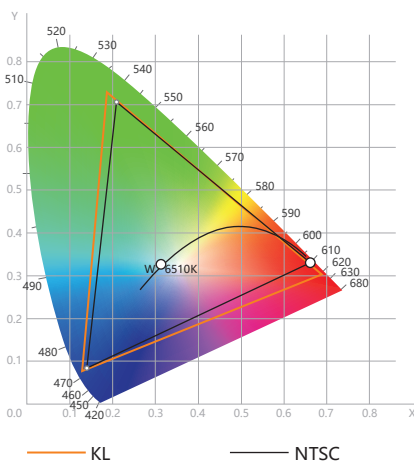
Wide Color Gamut



Low Contrast



Narrow Color Gamut



# Present Attractive and Lively Dynamic Images

- Adopt PWM LED driver IC to improve visual performance



High refresh rate

Quick response to moving objects  
No scan line when taking photos



High grayscale

Details still visible in the shadows



Low refresh rate

Photos taken with scan lines



Low grayscale

Details lost in the shadows



## Small Panel to Meet Requirements of Any Sizes

· 320\*160\*60mm small panel, compatible with 640\*480\*60mm standard panel to meet requirements of any sizes

## Standard Trim Pieces, Simple and Elegant

· Provide standard trim pieces solution to avoid shoddiness and save customers' time

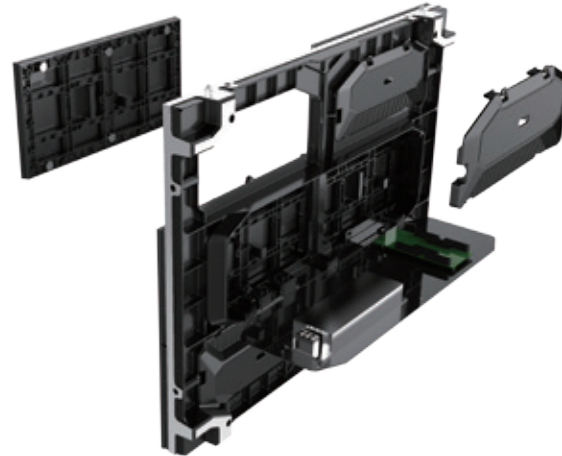


## Multiple Installation, Easy Maintenance

- Stack installation, easy to operate
- Support wall-mounting, hanging and stacking installation
- Support front & rear maintenance of module, receiving card and power supply



Front Maintenance



Rear Maintenance



Stacking



Wall-mounting



Hanging

## Safe and Stable

- Standard manufacturing process and a number of quality tests ensure safe operation of KL series



### Reliable raw materials

High quality LED lamp, power box and other accessories



### Quality control throughout whole manufacturing process

18 monitoring links  
29 operation processes  
33 recording links  
2285 inspections and tests



### Long service life

Pursue precision and high quality  
Energy efficiency, long service life



### Standardized manufacturing process

Adhere to standard manufacturing process to ensure product quality



### Certifications

China Compulsory Certification  
Energy Conservation Certification  
China Ecolabelling II  
Pass performance/ blue light hazard/ photobiology test, etc.



### Save operating cost

Stable product quality  
Low operation risks  
Low operating and maintenance costs



## Ready-to-Use LED

· Superior Quality / Worry-Free / Safe & Secure

VS

## On-Site Assembly LED

· Inferior Quality/ Troublesome/ Hidden Dangers

### Superior Quality

Excellent product design  
Reliable raw material  
Standard manufacturing process  
Quality control throughout the whole manufacturing process  
Extraordinary visual effect



### Worry-Free

Ready-to-use panel  
Quick installation  
One-stop standard solution  
Global service and long term warranty



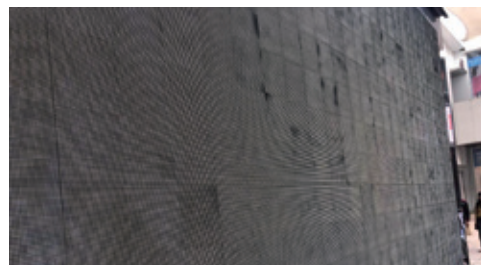
### Safe & Secure

Safe and trustworthy  
Certification  
Professional installation & maintenance services



### Inferior Quality

Crude product design  
Poor raw material  
Non-standard manufacturing process  
No strict quality control  
Terrible visual effect



### Troublesome

On-site assembly  
Complicated installation  
Non-standard solution  
Unreliable after-sales service



### Hidden Dangers

Great security risks  
No certification  
Non-standard installation & maintenance services

